

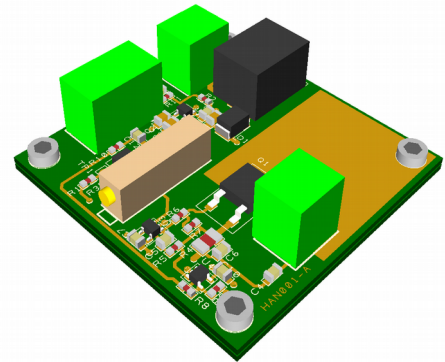
Hanchett Electronics

Linear LED Driver (Current Sink)

HAN-001

Description

The Hanchett HAN-001 Linear LED Driver is designed to provide an accurate current adjustment for LEDs in the range 30mA to 500mA. The driver is supplied as an assembled and tested PCB.



Applications

Constant current LED drive
Battery discharge testing

Features

Precision current sink
20 turn potentiometer current setting
Current monitor output 5V/A
Remote enable, volt free contact input
Screw Terminals
2.1mm DC socket and screw connections for power input

Specification

Supply Voltage	4.5V to 12V (power depends on load voltage drop)
Output Current	0mA to 500mA
External Enable	pull down to 0V turn off (max length 1m, use twisted pair)
Disabled Current	<1mA
Monitor output	0 to 2.5V represents 0 to 500mA (max length 1m, use twisted pair)
Accuracy	±2% off full scale
Operating Temperature	5° to 45°C
Storage Temperature	-45° to 85°C
Regulatory Requirements	PCB, components and solder are RoSH compliant, i.e. PB Free.

Connections

