

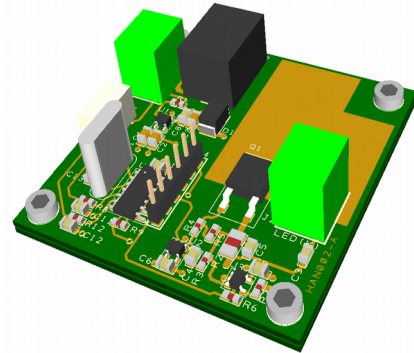
# Hanchett Electronics

Serial LED Driver

HAN-002

## Description

The Hanchett HAN-002 Serial Controlled Linear LED Current Sink is designed to provide a constant current drive in the range 2mA to 500mA. The driver is supplied as an assembled and tested PCB.



## Applications

Fluorescence Imaging  
Illumination

## Features

Current set-able in 2mA steps  
Current Feedback Measurement  
TTL serial interface for microcontrollers or USB UART  
57600 Baud serial interface with human readable commands  
Screw Terminals  
2.1mm DC socket and screw connections for power input

## Specification

Supply Voltage	4.5V to 9V
Max LED Current	0.5A
Serial Interface	5V TTL 2 wire RX/TX
Data Format	57600baud 8data bits 1 stop bit no parity, no flow control
Terminating	Carriage Return + Line Feed (0x0D+0x0A)
Operating Temperature	5° to 45°C
Storage Temperature	-45° to 85°C
Regulatory Requirements	PCB, components and solder are RoSH compliant, i.e. PB Free.

## Command Syntax

Measure<CR><LF>	returns nnn<CR><LF> LED Current
Continuous Measure<CR><LF>	terminated by sending <CR><LF>
Set LEDCurrent[=nnn]<CR><LF>	returns SET LEDCURRENT=old ->nnn
LEDOn<CR><LF>	returns DAC,Current
LEDOff<CR><LF>	returns DAC,Current
h<CR><LF>	help (this page)
#<CR><LF>	serial number
*<CR><LF>	reset cpu

Note: LED current steps are approx 1.96mA This may be changed on request at order time.

